

**ÖZKON**  
**ÇELİK**

---

**Light Steel Structure Systems**



Founded in 1998 by EMRAH KONUKSEVEN (Civil Engineer), **ÖZKON YAPI** continued its activities project-contracting and sales of construction materials. Over the years, it has expanded its activities in many titles such as projects, construction, interior decoration, and sales of fine structure materials in the construction sector. Our company, which continues its services in the construction sector within the understanding of Total Quality, has carried out more than 100 official superstructure building constructions, more than 1000 official and private building renovations and more than 300 residential and workplace constructions since its establishment.

In 2007, **ÖZKON ÇELİK**, our second group company, was established and it continues its activities in a total of **4750 m<sup>2</sup> closed and 16.500 m<sup>2</sup> open area** together with our **LIGHT STEEL** production center. In addition to light steel construction production, it also serves in alternative structural steel fields with its specialised staff.

Our companies and employees, who always strive to look ahead and operate with the principle and vision of being more advanced than they were before, are working with the aim of providing honest, principled service. They are committed to working with full dedication to remain top of mind.

**ÖZKON ÇELİK** has developed itself in the fields of **LIGHT STEEL** and **INDUSTRIAL STEEL STRUCTURES** by using error-free production technologies with its experience and quality production understanding and desire to become a notable brand in its sector with its vision of continuous change and development within the principle of continuity.





## Our Production Facilities



1.750 m<sup>2</sup> of Closed Area  
8.250 m<sup>2</sup> of Open Area



3.000 m<sup>2</sup> of Closed Area  
8.250 m<sup>2</sup> of Open Area







Smart Display  
Technology

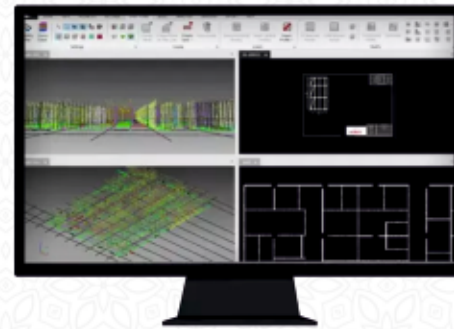
Production in  
World Norms

Defect-free  
Production  
Technology

Production  
up to  
1.6 mm sheet  
thickness

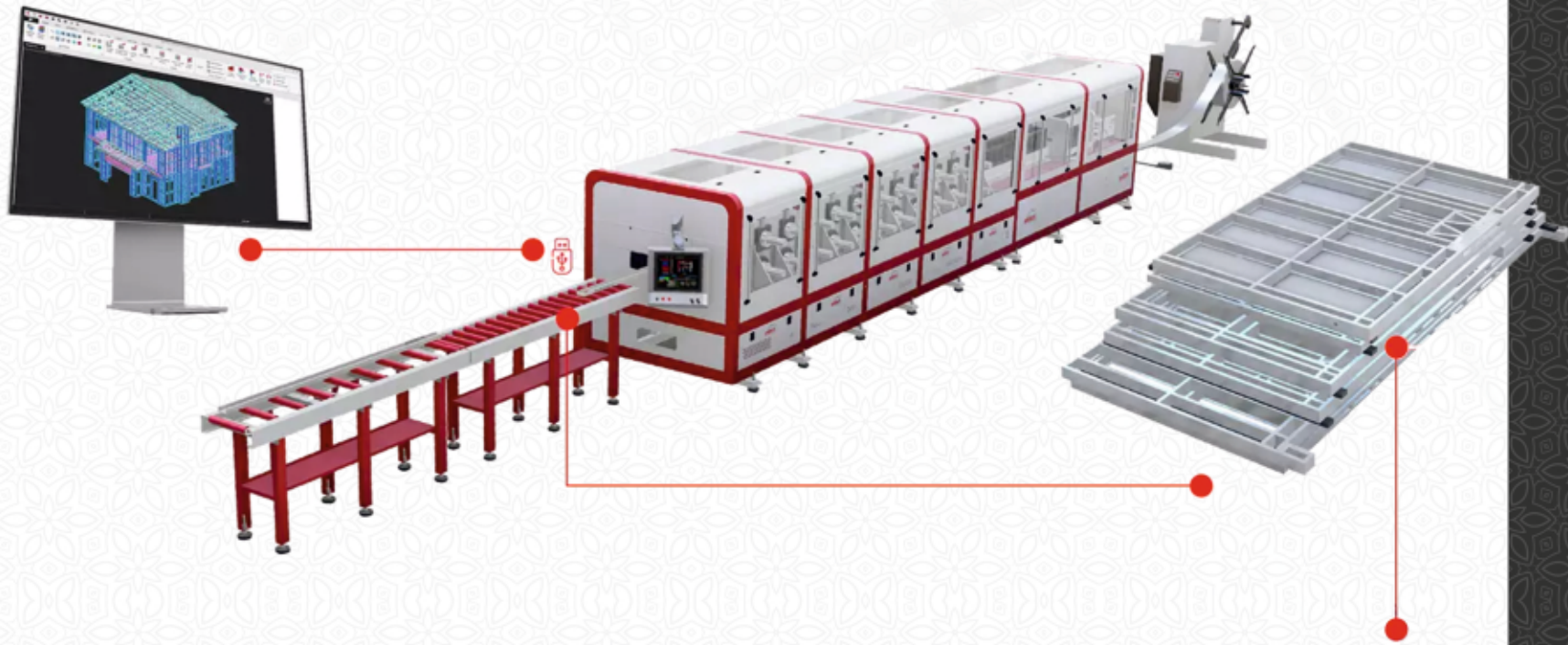
90 mm  
140 mm  
Profile  
Sections

With the most comprehensive, functional, and result-oriented design software developed for the design and detailing of light steel structures, all building panels can be created, detailed, and designed according to the architectural plan created in the software or imported into the software.





## Production



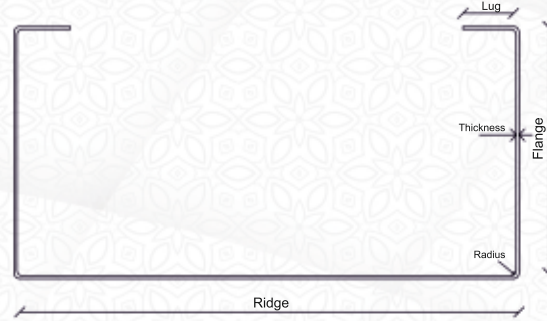
The projects designed by our Professional Engineers are uploaded to a smart screen equipped with the latest software. After the necessary controls, profiles are produced on the Light Steel Profile Line.

The profiles are numbered, assembled, packaged, and placed on site.





## Profiles



Ridge	90mm
Flange	41mm-51mm
Lug	0-10mm
Thickness	0.75mm-1.2mm
Radius	1.6mm



Ridge	140mm
Flange	41mm-51mm
Lug	0-10mm
Thickness	0.75mm-1.2mm
Radius	1.6mm

## Standard Process Stations



**Cutting**



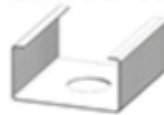
**Notching**



**Air Screw Riveting**



**Corner Rounding**



**Plumbing Hole**



**Back Bolt Index 2**



**Lug Cutting**



**Cornering**





Production



With Unlimited Designs Made of Steel  
**New Living Areas**





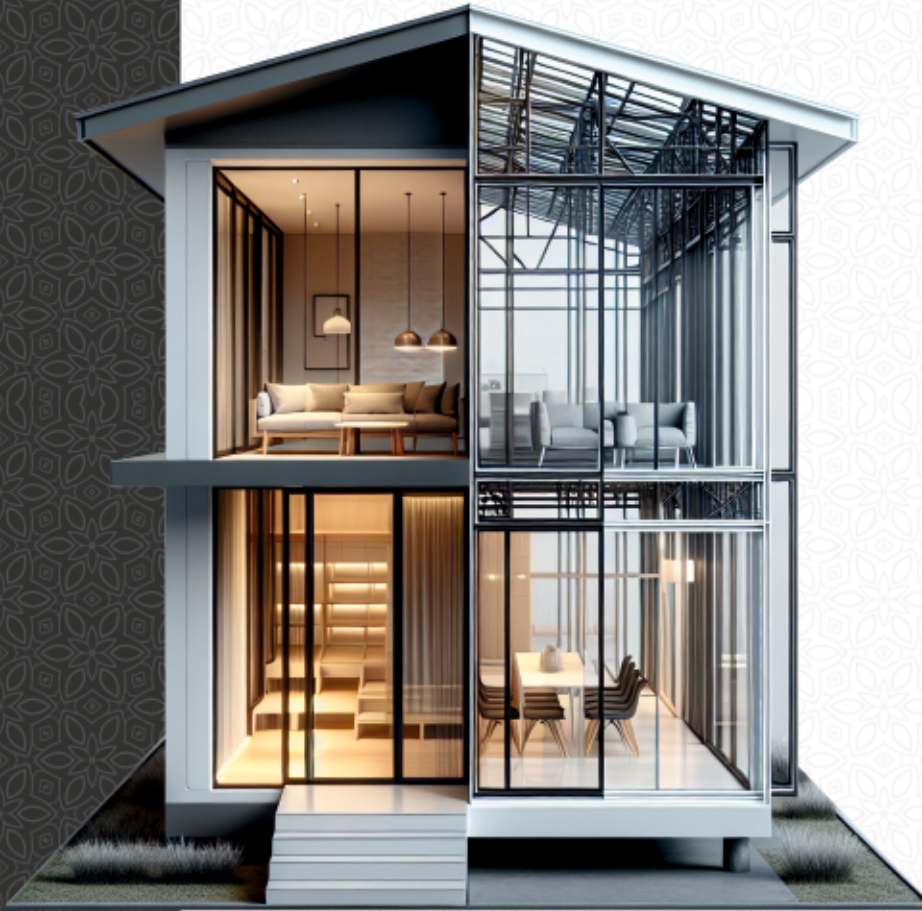
## Why Light Steel Structure?

### Low Material Cost

Light steel structures provide advantageous of less use of raw materials compared to conventional building materials. Reducing material costs and minimizing transportation and storage expenses. The fact that steel is a recyclable construction combines environmental sustainability and cost-effectiveness.

### Fast Construction Times

The production of light steel structures with prefabrication technology significantly shortens the time spent on the construction site. Short construction periods allow for reduced labor costs and faster project completion. This provides economic benefits for investors.



### Less Labor Requirement

Light steel structures require less force with modular design and ease of assembly. Compared to traditional construction methods, it can be built faster and more efficiently with fewer workers. This provides significant savings in construction costs.

### Long Life and Durability

Light steel structures lower maintenance costs thanks to their long-lasting and durable construction. The corrosion and insect resistance of steel minimises maintenance and durability of construction repair requirements in the long term, which reduces the total cost of benefits.

### Air Tightness

Light steel structures show superior performance in air tightness, this prevents unwanted airflow and minimises energy loss.





## Why Light Steel Structure?

### Energy Efficiency

Light steel structures also offer significant advantages in terms of energy efficiency. Well-insulated light steel structural elements minimise heat loss, resulting in energy savings. Reduces heating and cooling costs.

### High Strength to Weight Ratio

Light steel structures are capable of carrying large loads with a high strength-to-weight ratio. This provides extra usable space thanks to walls that occupy less space. Additionally this feature makes light steel structures ideal for seismic zones.

### Design Flexibility

Light steel offers great design flexibility for architects and engineers. Its ability to support complex building forms and large spans offers unlimited possibilities for creating aesthetic and functional solutions. This provides unlimited design advantages in both commercial and residential projects.

### Sustainability and Environmental Impact

The recyclability of steel makes light steel structures an environmentally friendly option. This sustainability provides economic benefits to project owners while fulfilling their environmental responsibilities.

### High Thermal Insulation

Light steel structures can be easily integrated with materials that offers high thermal insulation properties. This ensures a more comfortable temperature indoors and reduces heating/cooling costs.

### Fire Safety

Cold-formed steel can maintain its structural integrity for a long time during a fire. This ensures that buildings are less damaged after fire and repair costs are reduced.

Building Type Comparison	Reinforced Concrete Structure	Steel Structure
Earthquake Resistance	5-9 Mw <small>(Varies According to Countries.)</small>	<b>9 Mw</b>
Recyclability Rate	% 60 >	<b>% 90 &gt;</b>
Construction Time	180 Days (6 Months)	<b>60 Days (2 Months)</b>
Life of the Structure	30-40 Years	<b>80-180 Years</b>









## Light Steel Houses





## Light Steel Usage Areas



### Housing

Low-Rise Villas  
Medium Height Housing  
Disaster Housing  
Public Housing  
Modular Houses

### Corporate Buildings

Schools  
Health Centres  
Hospitals  
Polyclinics  
Military Barracks and Auxiliary Buildings

### Commercial Buildings

Company Headquarters  
Construction Site Buildings  
Worker Shelters  
Retail Sales Centre  
ATM Booths  
Warehouses  
Hotel / Resort / Bungalow

### Special Applications

Custom Designed According to Customer Needs  
Integrated Buildings  
Partition Wall Systems





## Some of Our References

















## Steel Construction



Steel construction is a steel building system with large spans and heights, where all load-bearing systems are made of steel, especially preferred in geographical areas threatened by earthquakes, and mostly preferred in steel construction factory buildings, steel construction hangars, steel construction sports facilities, steel construction warehouses and steel construction workshops.

Steel structures have superior functional properties, static capabilities and ease of application compared to other carrier systems. Our company offers provides steel construction project design, production, mounting service of welded and bolted system services in high-rise buildings, large span warehouses, and hangars.









## Steel Construction



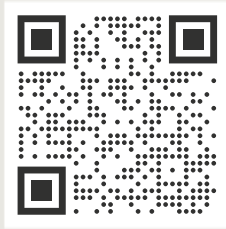


*Further than Yesterday*



Özkon Çelik Konstrüksiyon İnşaat  
Makina Turizm San. ve Tic. Ltd. Şti.

- Instagram: ozkoncelik
- Facebook: celikozkon
- X: ozkoncelik
- Email: export@ozkongrup.com
- Website: celik.ozkonyapi.com



+9 0338 224 10 44  
+9 0541 548 70 70

HEADQUARTERS:  
OSB 9.Str. No:8  
70200 / Karaman / Türkiye

BRANCH:  
OSB 28.Str. No:10  
70200 / Karaman / Türkiye